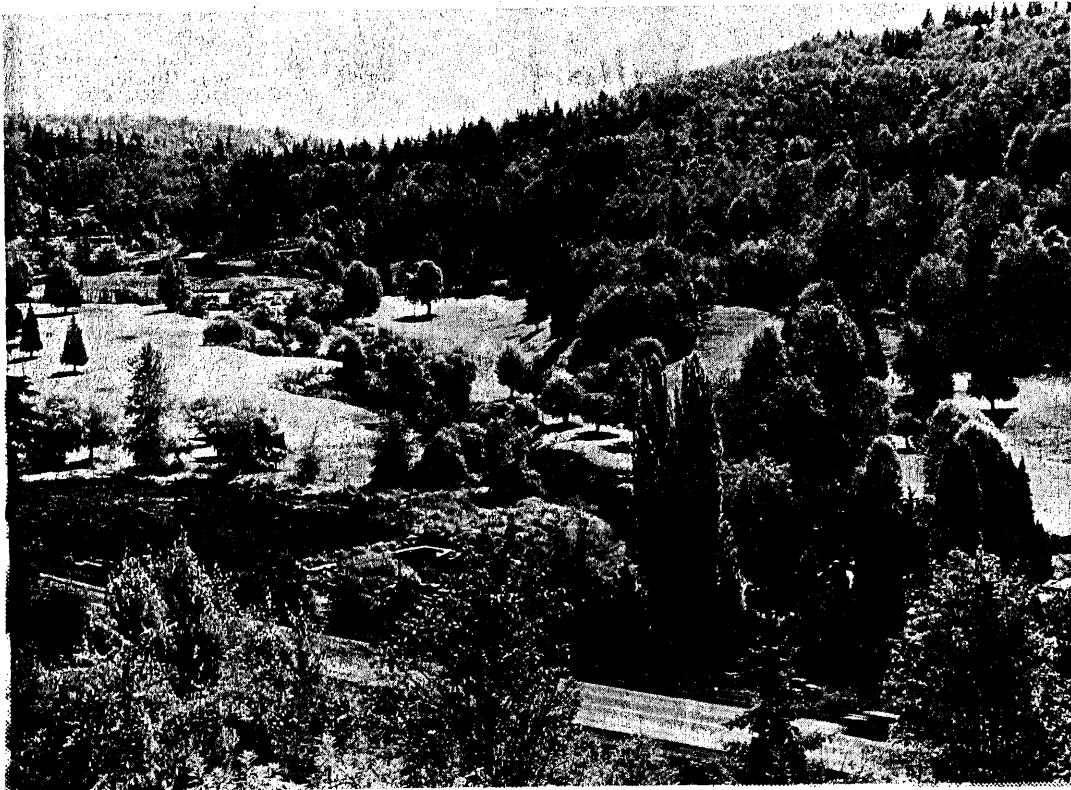


HUGE ENTRYWAY - Crews push construction of the huge entryway to Valhalla in hopes of having it completed for grand opening ceremonies that will take place this week-

end. The exclusive residential area will be open to the public Sunday, Sept. 20.

Grand Opening Valhalla Scheduled



TRANSFORMATION PROMISED - This beautiful hillside overlooking Wayne Golf Course was selected by the developers of

Valhalla as the site for one of the most outstanding residential areas planned in many years.

Valhalla homesites, the 126-acre hillside overlooking the present Wayne Golf Course and the Sammamish River, will officially hold its grand opening this weekend according to K. A. Sanwick, president of Valhalla, Inc.

Sanwick said a preview opening for 400 invited guests will be held Saturday and the grand opening for the public will be next Sunday.

Work of clearing the roads, constructing an entry and actual home construction has already started in the development, which eventually will involve 420 exclusive homes in the upper cost bracket.

Large view lots will be featured in the homesite development. They will be sold at a starting figure of \$7,500.

Among the many features planned for the development are a private club, Odin's Hall, constructed for the exclusive use of residents of the development.

The present Wayne Golf Course will be renamed Valhalla Golf Club.

Year around swimming will be provided by a gas heated swimming pool.

A yacht basin designed to berth 70 craft will be constructed on the Sammamish River.

Tennis courts will be provided in the recreational campus and water skiing ramps will be available on the River and opening into Lake Washington.

Developers have already made application to the Town of Bothell for the area to be served by the Bothell sewer system and plans call for all utilities to be constructed underground.

Northshore Enrollment Skyrockets

The Northshore School District enrollment skyrocketed again.

Supt. Julian Karp reports that the opening day of school for 1959 showed an increase of 13% over the opening day of school in 1958.

The combined enrollment of the Bothell and Woodinville school districts on opening day of school in 1958 was 3,665. The new Northshore District (both) showed an opening day school enrollment of 4,156. An increase of 491.



VALHALLA - The above sketch shows the entrance to Valhalla, projected residential development for 420 new Bothell

homes. Grand opening will be Sunday, Sept. 20.

Mc XLVIII #48
 9/17/1959
 Bethel City